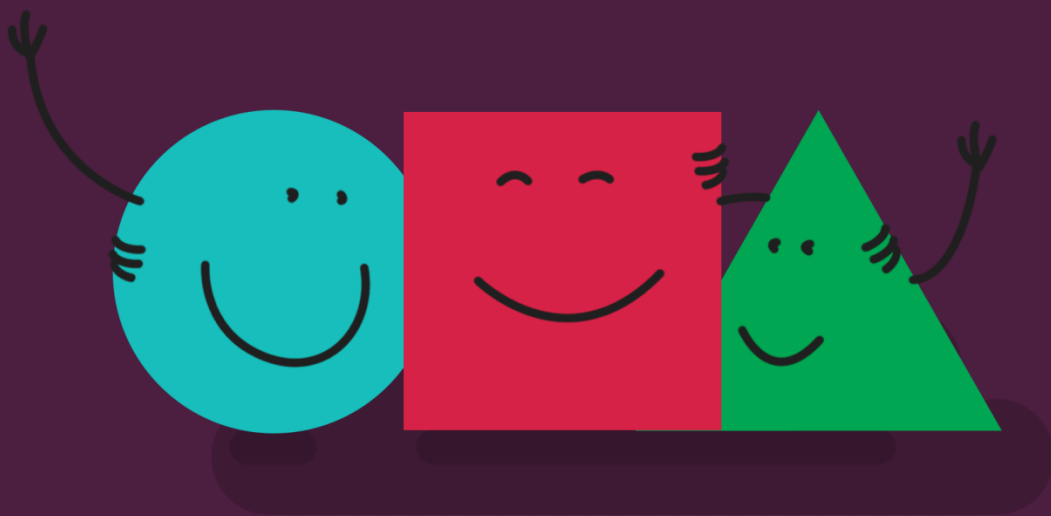




happy. safe. ready.

We are looking for a...

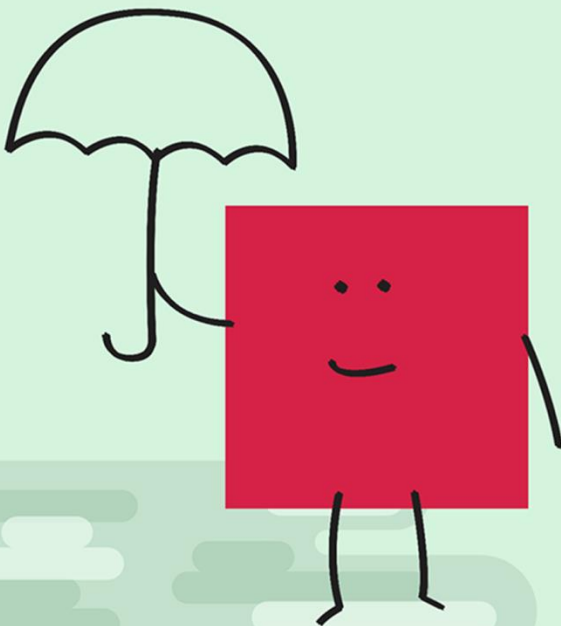
Play Therapist



we believe children
and young adults
should be **happy**,



they should be
safe...



and we think they
should be **ready**.



Job description

HSR Psychology is a not-for-profit social enterprise based in Greater Manchester. HSR provides Clinical Psychology services to individuals and educational establishments.

We work with children and young people to maximise wellbeing and potential by providing immediate access to a broad range of psychology services. HSR believes all children and young people should have their needs met at home and in the community so they can be happy, safe and ready to cope with life's challenges.

We have exciting opportunities for a play therapist to join the HSR Psychology team, working with schools and individuals. The role will involve working in school settings, helping children and young people to explore and overcome underlying issues, such as trauma or abuse, to maximise their emotional wellbeing and build resilience. The role will include 1:1 and group therapy sessions, completion of assessments and the delivery of early / preventative intervention techniques. Responsibilities also entail providing support, guidance, training and advice to parents, carers and schools. The successful applicant will be supervised in their role by senior members of our psychology team.

What does it take to be successful in this role?

To be successful in this role you would need to:

- To be successful in this role you would need to:
- Have a positive impact on the lives of children and young people by empowering them
- Be motivated by making a difference to the lives of children and young people
- Provide a consistently high standard of therapy for the children, young people and schools you work with and achieve tangible results
- Have impeccable communication skills in order to provide clear support and training to relevant parties
- Build a strong rapport with the children, young people, families and professionals you work alongside
- Have clear professional boundaries with the children and young people you work with
- Work well both independently and as part of a multidisciplinary team
- Be flexible in your approach and adapt to a variety of circumstances and requests, according to needs
- Practice with a holistic approach
- Act as a champion for HSR Psychology

Job description

The Ideal Candidate

The successful applicant must meet the following requirements:

- Qualified play therapist or equivalent play therapy qualification
- Member / Eligible for membership to BACP / UKCP / NCS / BPC
- Experience working with children and young people to provide a range of creative therapies, including but not limited to; art, drama and music therapy

Our ideal candidate will be a resilient, personable and approachable individual with a calm, sensitive and patient demeanor. They will have an understanding of the developmental, emotional, social and educational issues that children and young people experience and an awareness of range of needs of people from diverse ethnic, cultural and social backgrounds. They will have a non-judgemental outlook and will quickly gain the confidence of and build rapport and trust with children and young people.

The successful applicant will have knowledge of relevant frameworks, legislation, initiatives and services and will be committed to education, development and empowerment. They will have knowledge of a wide range of evidence based therapeutic interventions and be confident in delivering and facilitating interventions, as well as in providing training and advice to groups and individuals.

The successful candidate will possess excellent observational and listening skills, along with strong verbal and written communication in order to facilitate the delivery of the highest quality service. They will be tolerant and sensitive and will demonstrate respect for the confidentiality of the client therapist relationship. They will be pro-active, self-motivated and enthusiastic.

They will be confident working both independently and within a team and will have a flexible and innovative approach. They will also be conscientious, highly organised and able to prioritise their workload appropriately.

Due to the travel requirements of the role, this position would be most appropriate for an individual with a driving licence and access to a car.

We provide each child and young person with the skills they need to maximise their potential.



Job summary

TITLE:	Play Therapist
SALARY	£100 a day
LOCATION	North West of England
HOURS	Part Time
ACCOUNTABLE TO	Senior Management

HSR Psychology is part of the Tx Group: a growing private therapy company, providing a variety of health and education therapy services in the North West of England.

HSR Psychology is a not-for-profit social enterprise based in Greater Manchester. HSR Psychology offers psychology services to individuals, schools and colleges, working with children and young people to maximise wellbeing and potential by providing immediate access to a broad range of psychology services. HSR believes all children and young people should have their needs met at home, school and in the community so they can be happy, safe and ready to cope with life's challenges.

HSR Psychology provides input to early years, schools and in post sixteen education settings in the North West of England, as well as from our clinic based in central Manchester. Our employees make a real difference by contributing to the development of an environment to ensure children and young people's attainment, wellbeing, and progress is maximised.

The play therapist will join our HSR Psychology team, working with schools and individuals in the North West of England.



Job summary

Job summary

Main Responsibilities:

- Establish a relationship of trust and respect with the children, young people and adults you work with
- Provide individual and group play therapy, including additional creative therapies such as; art, music or drama
- Provide information on the service and the role of the play therapist to students and staff.
- Work in accordance with British Association for Counselling and Psychotherapy (BACP) Ethical Framework and specifically BACP's Good Practice Guidance for Counselling in Schools.
- Provide high-quality play therapy services in educational settings involving:
 - Discussion and exploration of difficulties in a confidential and non-judgemental atmosphere
 - Encouraging children / young people to talk about issues they feel they cannot normally share with others
 - Actively listening to children's / young people's concerns and empathising with their position
 - Accepting without bias the issues raised
 - Help children and young people develop a better understanding of themselves and their difficulties and increase their self-awareness
 - Help children / young people to see things more clearly or differently
 - Help children and young people develop personal resources needed to manage and address problems and pursue meaningful goals
 - Help children / young people to make decisions and choices regarding possible ways forward
 - Help develop strategies to cope with change
 - Empathise but challenge when necessary
 - Build resilience
- Identify pupils in need of support - complete assessments, risk assessments and carry out early intervention measures / preventative intervention.
- Provide support, guidance and advice to parents, carers and the school.
- Work with families.
- Train staff, parents and carers.
- Maintain accurate session records and write reports as and when required.
- Attend internal and external meetings as required.
- Organise and administer the service in conjunction with schools' staff.
- Collaborate / liaise with multidisciplinary team and school staff, in the best interest of the young person, whilst within the limits of client confidentiality.
- Work together and help education providers develop environments to ensure their students' attainment, wellbeing, and progress is maximised.
- Provide appropriate statistical returns as required, evaluate outcomes of therapeutic work and gather feedback on the service.
- Undertake project and practice evaluation as directed.
- Participate in research as required.

Job summary

- Provide a flexible service that adapts to the needs of the child, young person, or educational setting.
- Refer clients to other sources of help, as appropriate.
- Refer child protection concerns to the senior designated person within the school
- Maintain and develop professional practice through participating in regular supervision. with your external supervisor and with our multidisciplinary team.
- Keep up to date with child protection issues, current policy and procedure.
- Promote a culture of inclusion at all times.



Job summary

Responsibilities

General Responsibilities:

- To manage all tasks effectively and efficiently.
- Set high standards of self and others, assume responsibility and accountability for completion of tasks on behalf of the team.
- Monitor and update diary and bookings system where necessary
- Update clinical notes following each appointment
- Actively participate in selected quality management activities.
- Assist with the coordination of everyday services
- To demonstrate effective time management and organisational skills during management of own workload and to be able to adapt to a changing work pattern

Team Member Responsibilities:

- Run an efficient and high quality service
- Collaborate to deliver an excellent customer journey and experience
- participate as part of a happy and motivated dynamic team
- provide the best experience in all environments

Teaching, Training and Professional Development Responsibilities:

- Participate in the appraisal system as appraisee, and be responsible for fulfilling agreed objectives and personal development plan.
- Recognise own development needs and identify in conjunction with how these can be met.
- Participate in the teaching and training of team members

This job description is not meant to be exhaustive and reflects only the current and anticipated responsibilities of the post. The successful applicant will be expected to work flexibly in order to meet the overall needs of the position.

How to apply

To apply, please send your CV and any covering information to careers@hsrpsychology.co.uk



**We provide immediate access to
broad range of child psychology
services to early years, schools,
post-16 education providers,
parents and carers.**



happy. safe. ready.

Apply today!

**To apply please send your CV
and any covering information to:
careers@hsrpsychology.co.uk**

