



happy. safe. ready.

We are looking for a...

Play Therapist



Job info

HSR Psychology is a not-for-profit social enterprise based in Greater Manchester. HSR provides Clinical Psychology services to individuals and educational establishments. We work with children and young people to maximise their wellbeing and potential by providing immediate access to a broad range of psychology services. HSR believes all children and young people should have their needs met at home and in the community so they can be happy, safe and ready to cope with life's challenges.

We have exciting opportunities for a play therapist to join the HSR Psychology team, working with schools and individuals. The role will involve working in school settings, helping children and young people to explore and overcome underlying issues, such as trauma or abuse, to maximise their emotional wellbeing and build resilience. The role will include 1:1 and group therapy sessions, completion of assessments and the delivery of early / preventative intervention techniques. Responsibilities also entail providing support, guidance, training and advice to parents, carers and schools. The successful applicant will be supervised in their role by senior members of our psychology team.

We're a mindful employer:

We are a signatory to the 'Charter for Employers who are Positive About Mental Health'. As such we are committed to working towards the following principles:

- Increasing awareness of mental health**
- Good practices not 'great promises'**
- Safe people and friendly places**
- Commitment to change**

[Read More](#)

we believe children
and young adults
should be **happy**,



they should be
safe...

and we think they
should be **ready**.



The ideal candidate

The successful applicant must meet the following requirements:

- Qualified play therapist or equivalent play therapy qualification.
- Member / Eligible for membership to BACP / UKCP / NCS / BPC.
- Experience working with children and young people to provide a range of creative therapies, including but not limited to; art, drama and music therapy.

Our ideal candidate will be a resilient, personable and approachable individual with a calm, sensitive and patient demeanour. They will have an understanding of the developmental, emotional, social and educational issues that children and young people experience and an awareness of the range of needs of people from diverse ethnic, cultural and social backgrounds. They will have a non-judgemental outlook and will quickly gain the confidence of and build rapport and trust with children and young people.

The successful applicant will have knowledge of relevant frameworks, legislation, initiatives and services and will be committed to education, development and empowerment. They will have knowledge of a wide range of evidence based therapeutic interventions and be confident in delivering and facilitating interventions, as well as in providing training and advice to groups and individuals.

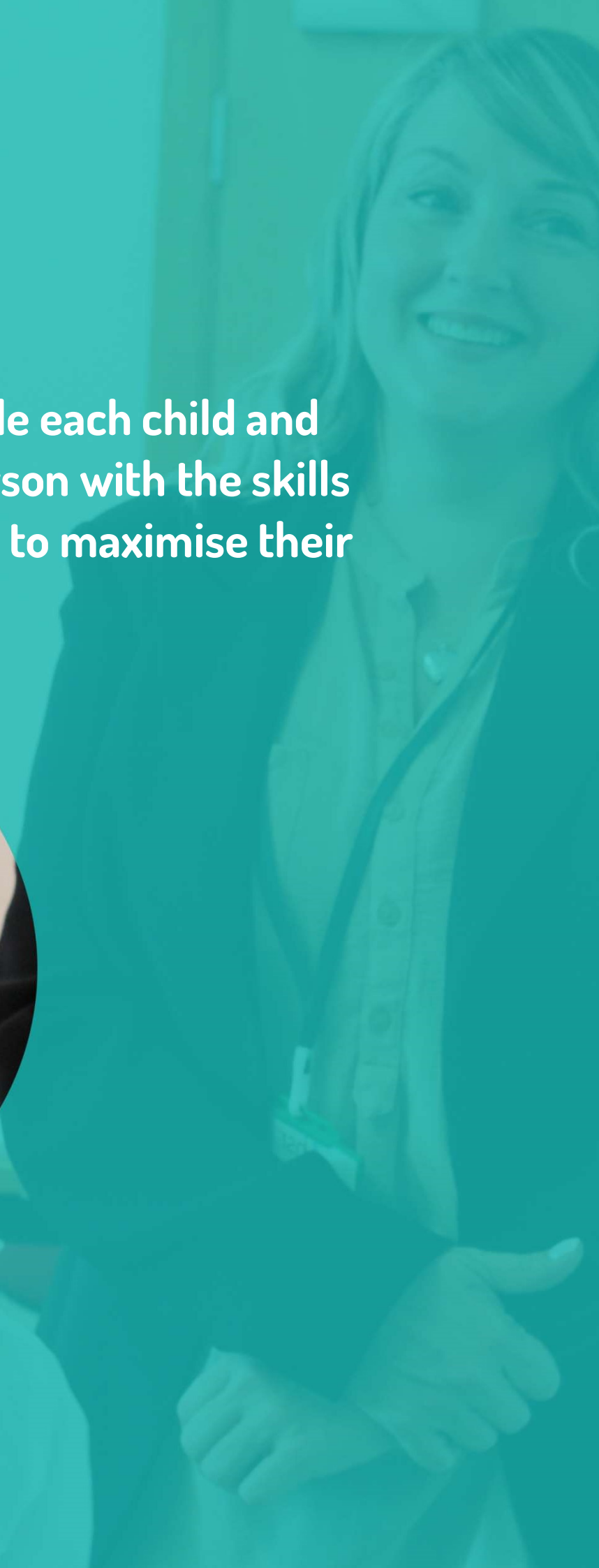
The successful candidate will possess excellent observational and listening skills, along with strong verbal and written communication in order to facilitate the delivery of the highest quality service. They will be tolerant and sensitive and will demonstrate respect for the confidentiality of the client therapist relationship. They will be proactive, self-motivated and enthusiastic.

They will be confident working both independently and within a team and will have a flexible and innovative approach. They will also be conscientious, highly organised and able to prioritise their workload appropriately.

Due to the travel requirements of the role, this position would be most appropriate for an individual with a driving licence and access to a car.



We provide each child and young person with the skills they need to maximise their potential.



What does it take to be successful in this role?

To be successful in this role you would need to:

- Have a positive impact on the lives of children and young people by empowering them.
- Be motivated by making a difference to the lives of children and young people.
- Provide a consistently high standard of therapy for the children, young people and schools you work with and achieve tangible results.
- Have impeccable communication skills in order to provide clear support and training to relevant parties.
- Build a strong rapport with the children, young people, families and professionals you work alongside.
- Have clear professional boundaries with the children and young people you work with.
- Work well both independently and as part of a multidisciplinary team.
- Be flexible in your approach and adapt to a variety of circumstances and requests, according to needs.
- Practice with a holistic approach.
- Act as a champion for HSR Psychology.



We provide immediate access to broad range of child psychology services to early years, schools, post-16 education providers, parents and carers.

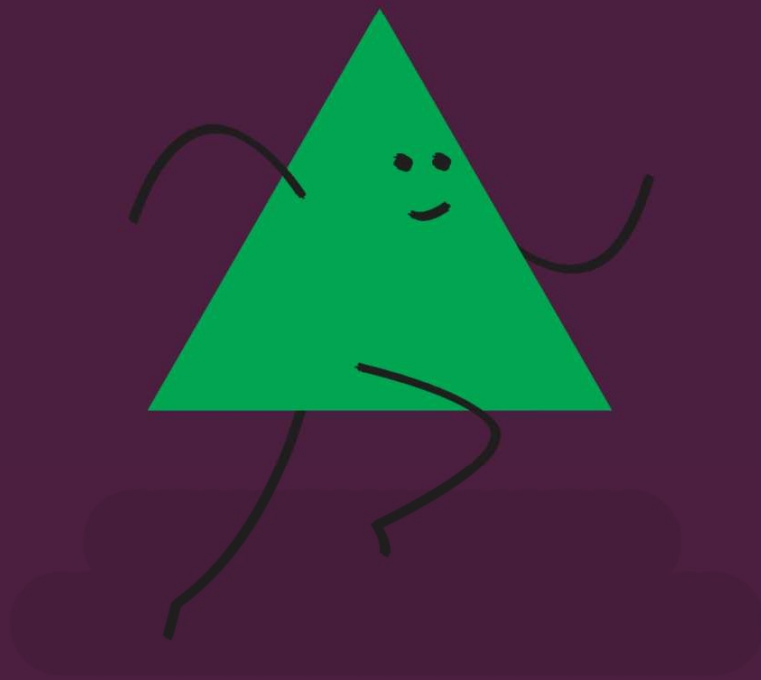
Why us?

At HSR Psychology we believe that looking after our employees and providing them with an enjoyable working environment is an important aspect to a successful organisation. If you are successful in this application process, you will be able to enjoy:

- Working for an innovative organisation that puts children and young people's needs first.
- Being part of a supportive team.
- Multidisciplinary group supervision opportunities with counselling psychologists, clinical psychologists, educational psychologists, speech & language therapists, occupational therapists, counsellors, mental health professionals and specialist teachers.
- Opportunities for school based work, as well as work within a private setting.
- Regular staff events.
- Flexibility in hours.



**We believe that children and
young people's needs belong at
the centre of everything we do.**



Apply now

To apply for this position please send your CV along with any covering information to:

careers@hsrpsychology.co.uk

Alternatively, if you have any questions regarding the role please contact us using the methods below:

Call us on: 0161 820 9229

Address: HSR Psychology, 3-5 St John St, Manchester, M3 4DN

Follow us on social media:



Part of Tx Group