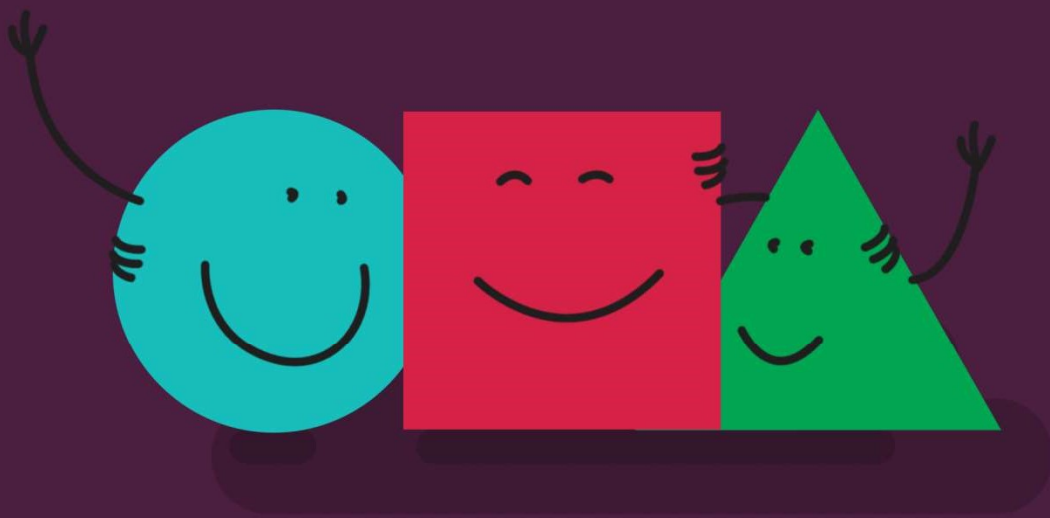




happy. safe. ready.

We are looking for a...

Trainee Psychologist



Placement info

HSR Psychology is part of the Tx Group: a growing private therapy company, providing a variety of health and education therapy services in the North West of England.

HSR Psychology is a not-for-profit social enterprise which is independently owned and controlled and is committed to creating a positive social impact in the North West of England. HSR provides clinical, counselling and educational psychology services to individuals and education settings. We work with children and young people between the ages of 0-25 with various special educational needs and/or disabilities (SEND), with the aim to maximise wellbeing and potential by providing immediate access to a broad range of psychology services. HSR believes all children and young people should have their needs met at home, school and in the community so they can be happy, safe and ready to cope with life's challenges.

Here at HSR Psychology we promote and support development and this includes providing placement opportunities for trainee psychologists. We can provide placements for:

- Trainee educational psychologists
- Trainee clinical psychologists
- Trainee counselling psychologists

Any placements we provide would form part of a trainee psychologist's university course and would count towards their accredited hours.

We can provide placements working with children and young people across the 0 to 25 age range.

We're a mindful employer:

We are a signatory to the 'Charter for Employers who are Positive About Mental Health'. As such we are committed to working towards the following principles:

- Increasing awareness of mental health**
- Good practices not 'great promises'**
- Safe people and friendly places**
- Commitment to change**

[Read More](#)

we believe children
and young adults
should be **happy**,



they should be
safe...

and we think they
should be **ready**.



The ideal candidate

Trainees on the following courses can take their placement at HSR Psychology:

- DEdChPsy - Doctorate in educational and child psychology at the University of Manchester
- ClinPsyD - Doctorate in clinical psychology at the University of Manchester
- University of Leeds, Lancaster University and the University of Liverpool
- PD Counselling Psychology at the University of Manchester

If you are doing the same qualification at a different university then please contact us to see if we can accommodate your needs.

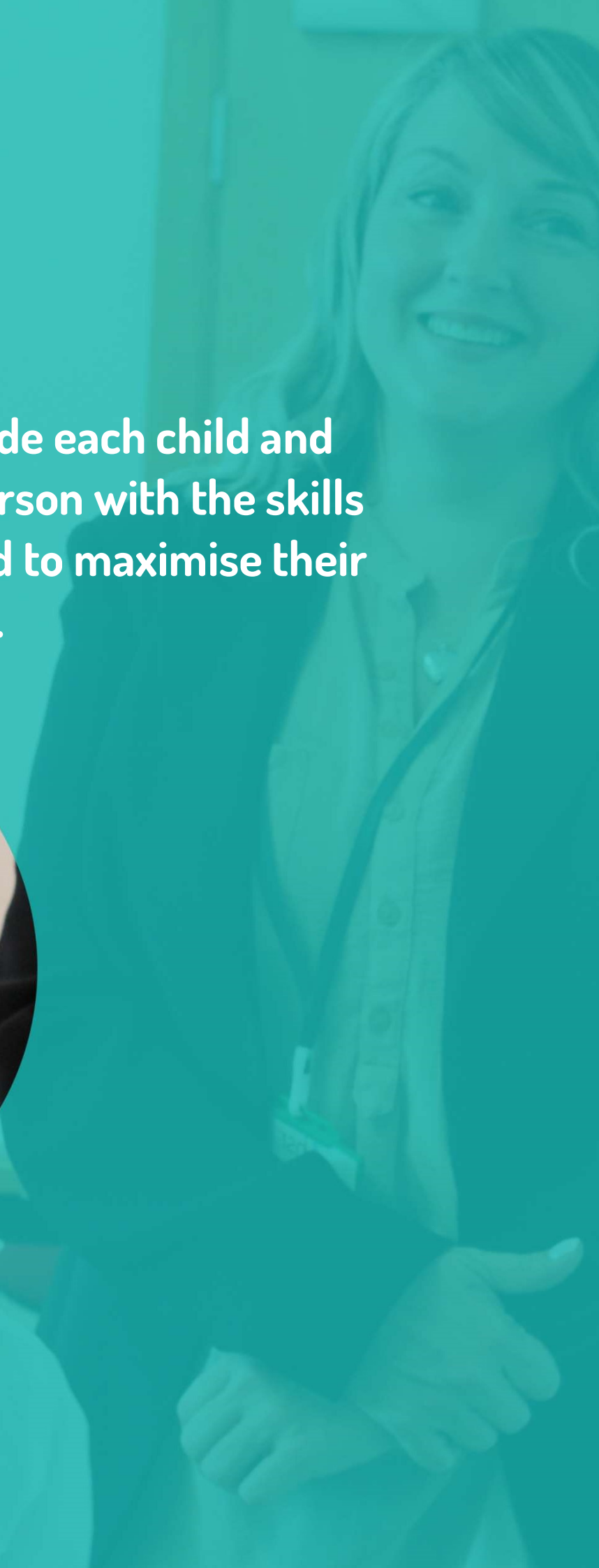
Our ideal candidate will be a personable individual with a calm, caring and patient demeanour. They will be capable of quickly establishing a rapport with children and young people and will have a positive, motivating and encouraging attitude. They will have impeccable communication skills and will be at ease delivering interventions, training and advice to groups and individuals.

The successful candidate will be conscientious, focused and confident working both independently and within a team. They will be highly organised, comfortable working to deadlines and able to prioritise their workload appropriately.

Due to the travel requirements of the role, this position would be most appropriate for an individual with a driving licence and access to a car.



We provide each child and young person with the skills they need to maximise their potential.



What does it take to be successful in this role?

To be successful within this role you would need to:

- Be committed to making a difference to the lives of children and young adults.
- Practice with a holistic, child-centred approach.
- Have impeccable communication skills in order to provide clear support.
- Build a strong rapport with the children, families and professionals you work alongside.
- Work well both independently and as part of a multidisciplinary team.
- Be flexible in your approach and adapt to a variety of circumstances and requests, according to needs.
- Act as a champion for the HSR Psychology service.

During a placement with HSR Psychology you will:

- Receive regular supervision from an appropriate psychologist.
- Work with the full 0 to 25 age range.
- Complete accredited hours.
- Learn and practice clinical skills.
- Increase your core knowledge of the subject.
- Apply psychology to your everyday work.
- Complete a mixture of assessments and therapeutic interventions.

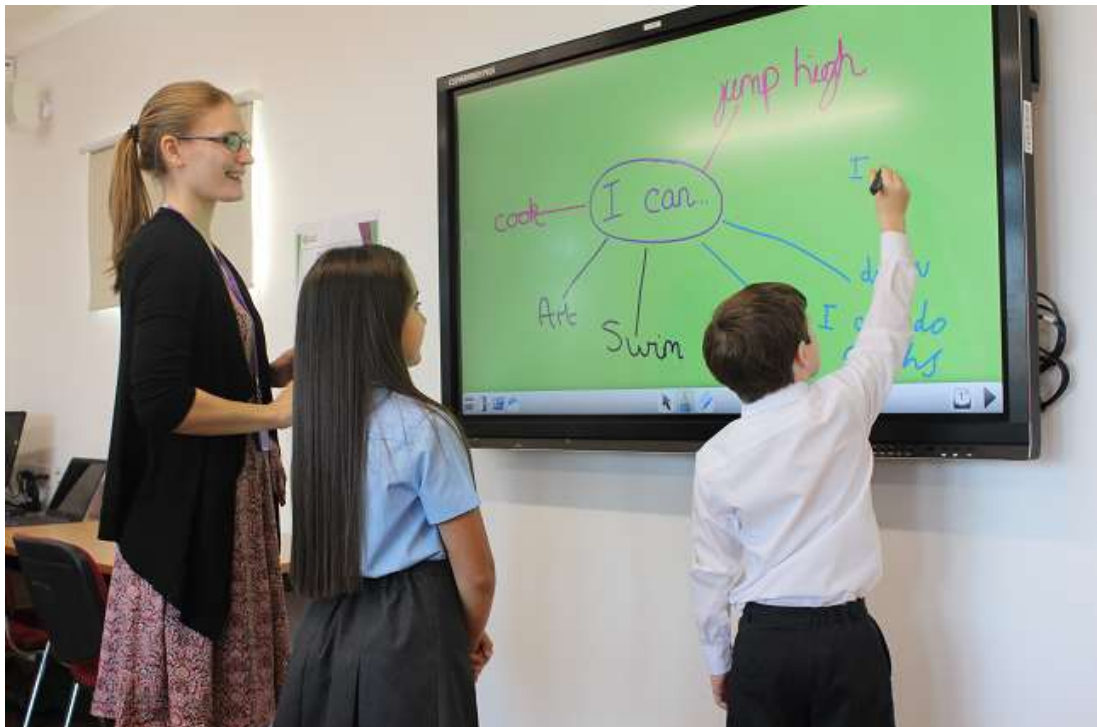


We provide immediate access to broad range of child psychology services to early years, schools, post-16 education providers, parents and carers.

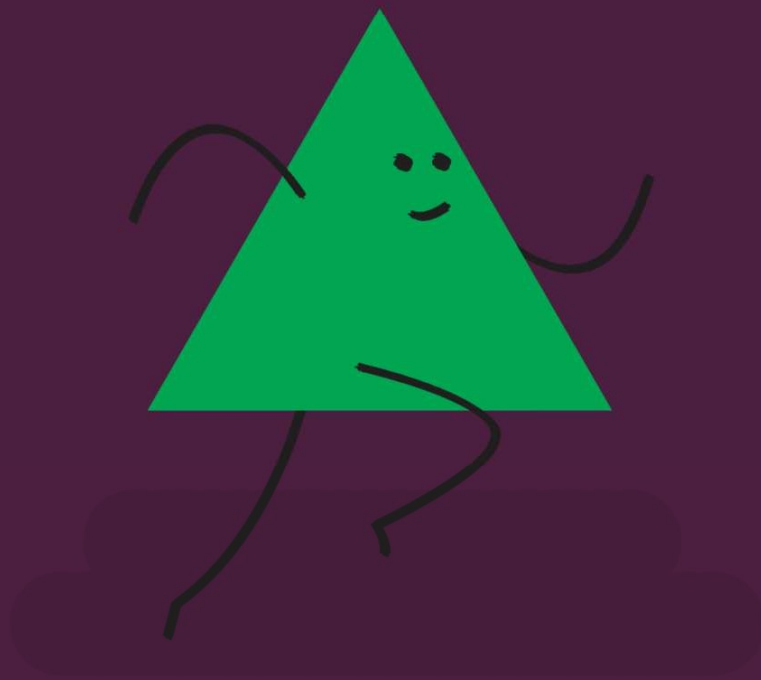
Why us?

At HSR Psychology, we believe that looking after our employees and providing them with an enjoyable working environment is an important aspect to a successful organisation. If you are successful in this application process, you will be able to enjoy:

- Working for an innovative organisation that puts children and young people's needs first.
- Being part of a supportive team.
- Performance-based bonuses.
- Multidisciplinary links with assistant psychologists, clinical psychologists, educational psychologists, speech & language therapists, occupational therapists, mental health professionals and specialist teachers.
- Opportunities for school based work, as well as work within a clinic setting.
- Opportunities for both statutory and non-statutory working.
- Regular staff events.
- Flexibility in hours.
- Recognition.



We believe that children and young people's needs belong at the centre of everything we do.



Apply now

Contact us at careers@hsrpsychology.co.uk to discuss how we can meet your placement needs. It would be useful for you to provide us with the below information:

- Covering information
- CV
- Proposed dates (including duration and number of days a week)
- Course details

We respond to all suitable enquiries from trainee psychologists on a current doctorate or equivalent course.

Alternatively, if you have any questions regarding the role please contact us using the methods below:

Call us on: 0161 820 9229

Address: HSR Psychology, 3-5 St John St, Manchester, M3 4DN

Follow us on social media:



Part of Tx Group