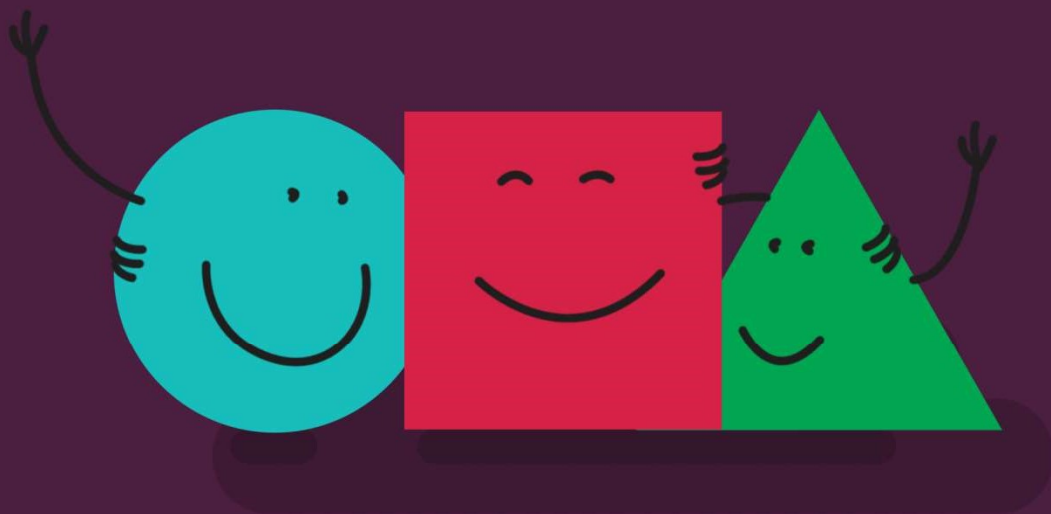




happy. safe. ready.

We are looking for a...

Work-based placement student



Placement info

HSR Psychology is part of the Tx Group: a growing private therapy organisation, providing a variety of health and education therapy services in the North West of England.

HSR Psychology is a not-for-profit social enterprise committed to helping children and young people be happy, safe and ready for life's challenges. We are a small service with educational psychologists, clinical psychologists, counselling psychologists, counsellors and assistant psychologists. We provide services directly to young people, education settings, parents and carers. As a team, we work closely with a wider multidisciplinary team including; occupational therapists, speech and language therapists, specialist teachers, SENCOs, physiotherapists and dietitians.

Placement duties will involve supporting the psychologists in providing services, through a range of duties, including:

- Increasing awareness of the positive role psychology can have on children and young people.
- Acting as an intermediary point of contact between the school and psychologist.
- Gathering information on behalf of psychologists to support SEN processes.
- Attending service meetings and contribute to aims of the service.
- Undertaking further training as part of continuing professional development.
- Providing a flexible service that adapts to the needs of the child, young person, or educational setting.
- Demonstrating evidence of the cost effectiveness of our services.
- Assisting with our social impact measurement and reporting.
- Assisting in marketing.
- Assisting with our social media.
- Assisting in the planning and marketing of events.
- Writing content for our website and blog.
- Creating, developing and updating resources.
- Speaking to parents and schools via phone and email that have enquired about psychology services.
- Research.
- Documenting case studies.
- Engage in relevant searches of psychological literature to develop and enhance courses, packages and materials used by the service.
- Provide general administrative support.
- Supporting team members in the completion of a full range of service tasks.

We're a mindful employer:

We are a signatory to the 'Charter for Employers who are Positive About Mental Health'. As such we are committed to working towards the following principles:

- Increasing awareness of mental health**
- Good practices not 'great promises'**
- Safe people and friendly places**
- Commitment to change**

[Read More](#)

we believe children
and young adults
should be **happy**,



they should be
safe...

and we think they
should be **ready**.



The ideal candidate

We have exciting opportunities for students wanting to complete a work-based placement. We can provide placements for both undergraduate and master's degrees. Common courses that may require a work-based placement within psychology include:

- Counselling.
- Psychology.
- Psychotherapy .

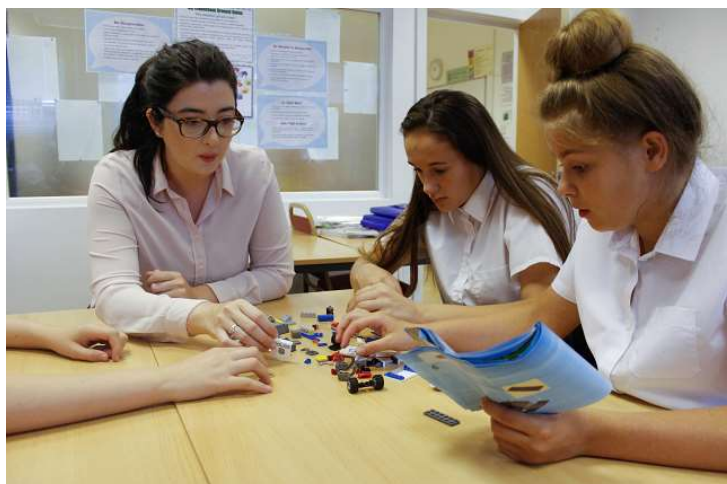
Placement duties will build on existing psychological knowledge gained through the degree and provide specialist information in relation to child development, special educational needs and mental health. Essential skills, knowledge and qualities required for a work-based placement with HSR Psychology are:

- Strong verbal and written communication skills.
- Well organised and able to prioritise workload.
- IT skills.
- Ability to engage, communicate and work in partnership effectively with children and young people, carers, school staff & members of a children's service.
- Ability to work well both independently and as part of a team.

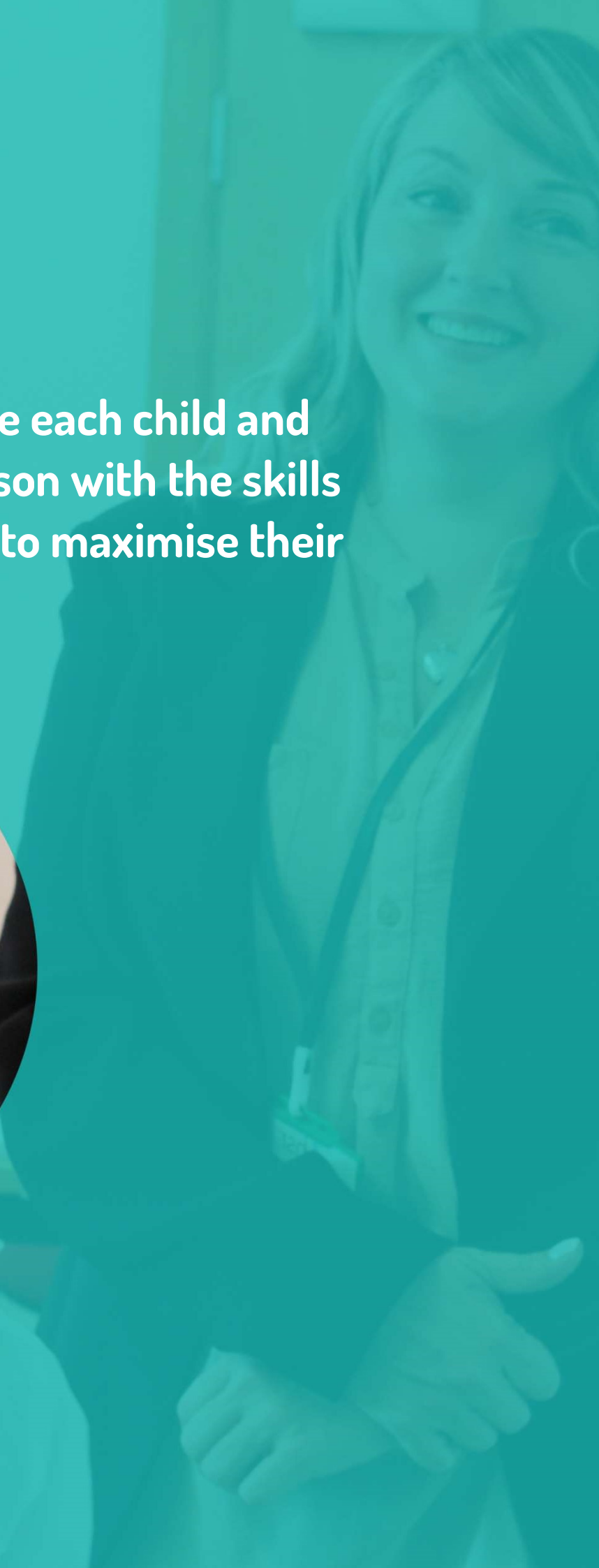
Desirable skills, knowledge and qualities required:

- Knowledge of development, mental health and wellbeing.

Please note all our placements are a minimum of 60 days, unpaid and available full or part-time. Due to the amount of training and input we provide to people on placement we are unable to accept short-term placements.



We provide each child and young person with the skills they need to maximise their potential.



What does it take to be successful in this role?

To be successful within this role you would need to:

- Be committed to making a difference to the lives of children and young adults.
- Have impeccable communication skills.
- Build a strong rapport with the children, families and professionals you work alongside.
- Work well both independently and as part of a multidisciplinary team.
- Be flexible in your approach and adapt to a variety of circumstances and requests, according to needs.
- Act as a champion for the HSR Psychology service.
- Have good organisational skills with the ability to prioritise workload.
- Be able to liaise with schools and parents and carers in a professional manner.
- Apply knowledge from your degree to a wide range of areas.
- Have a high standard of written communication.



We provide immediate access to broad range of child psychology services to early years, schools, post-16 education providers, parents and carers.

Why us?

At HSR Psychology, we believe that looking after our employees and providing them with an enjoyable working environment is an important aspect to a successful organisation. If you are successful in this application process, you will be able to enjoy:

- Working for an innovative organisation that puts children and young people's needs first.
- Being part of a supportive team.
- Multidisciplinary links with assistant psychologists, clinical psychologists, educational psychologists, speech & language therapists, occupational therapists, mental health professionals and specialist teachers.
- Opportunities for school based work, as well as work within a clinic setting.
- Regular staff events.
- Flexibility in hours.
- Recognition.
- Opportunities for continuous professional development and access to training courses.
- Regular supervision from your line manager.
- Working alongside a range of health professionals in a multidisciplinary team.





happy. safe. ready.

**We believe that children and
young people's needs belong at
the centre of everything we do.**



Apply now

Many psychology-based degrees include work-based placements as part of the course. If you are currently on a psychology degree and looking for a work-based placement in applied psychology for children and young people then please send a copy of your CV and a cover letter to: careers@hsrpsychology.co.uk

We receive many requests for work-based placements, therefore, please send a copy of your CV and include a cover letter. It would also be useful to let us know the proposed date and length of your placements, as well as the details of your course.

Unfortunately we are unable to respond or give feedback to all applications. You can increase the likelihood of a response by providing all the above, being on an appropriate course and being able to work in the Manchester area.

Alternatively, if you have any questions regarding the role please contact us using the methods below:

Call us on: 0161 820 9229

Address: HSR Psychology, 3-5 St John St, Manchester, M3 4DN

Follow us on social media:



Part of Tx Group