



happy. safe. ready.

We are looking for an...

Assistant Educational Psychologist



Job info

HSR Psychology is part of the Tx Group, a privately owned network which provides therapy services in the North West of England. HSR Psychology offers psychology services to individuals, schools and colleges, working with children, adolescents and young adults to maximise wellbeing and potential by providing immediate access to a broad range of psychology services. HSR believes all children and young people should have their needs met at home, school and in the community so they can be happy, safe and ready to cope with life's challenges.

HSR Psychology provides input to early years, schools and in post sixteen education settings in the North West of England and offers support from our clinics based in the centre of Manchester. Our employees make a real difference by contributing to the development of an environment to ensure children's attainment, wellbeing, and progress is maximised.

We have exciting opportunities for Assistant Educational Psychologists to join the team, working with schools and individuals in the North West. We anticipate the roles will be predominantly school based and will involve providing assessments, consultations and interventions, as well as delivering training to individuals and groups to increase awareness and offer guidance. Successful candidates will work collaboratively with our team of clinical psychologists, educational psychologists and assistant psychologists and will receive regular supervision from senior members of the team.

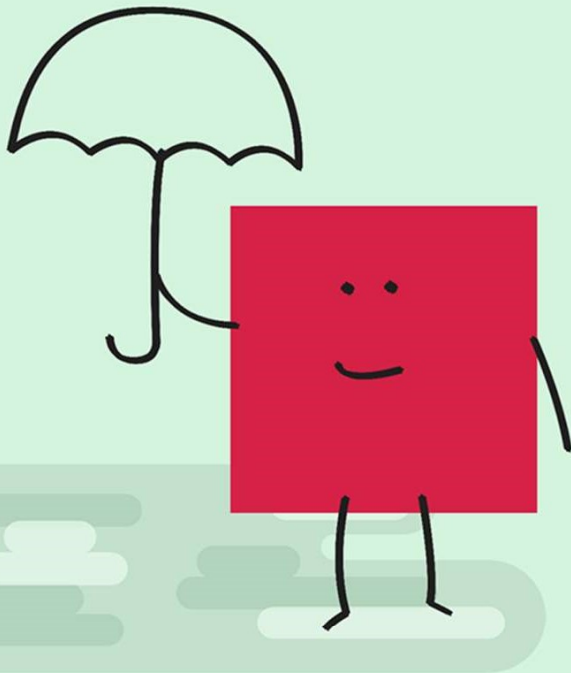
We're a mindful employer:

We are a signatory to the 'Charter for Employers who are Positive About Mental Health'. As such we are committed to working towards the following principles:

- Increasing awareness of mental health
- Good practices not 'great promises'
- Safe people and friendly places
- Commitment to change

[Read More](#)

we believe children
and young adults
should be **happy**,



they should be
safe...

and we think they
should be **ready**.



The ideal candidate

The ideal candidate must have the following:

- Working towards the Doctorate in Educational Psychology
- Eligible for AEP/BPS membership
- Experience working directly with children, families and in education settings
- Experience with education, health and care plans

Our ideal candidate will be a personable individual with a calm, caring and patient demeanour. They will be highly motivated, capable of building strong relationships quickly and of bringing out the best in the children and young adults they work with. They will have a good knowledge of mental health and wellbeing issues and of appropriate interventions.

The successful candidate will have impeccable communication skills in order to facilitate the delivery of the highest quality service to children and young people. They will be at ease with delivering training and advice to groups and individuals and have a flexible and innovative approach. In addition, they will be conscientious, highly organised and confident working both independently and within a team.

Due to the travel requirements of the role, this position would be most appropriate for an individual with a driving licence and access to a car.



**We provide each child and
young person with the skills
they need to maximise their
potential.**



What does it take to be successful in this role?

To be successful within this role you would need to:

- Be motivated by making a difference to the lives of children and young adults.
- Provide a consistently high standard of interventions for the children and schools you work with and achieve tangible results.
- Build a strong rapport with the children, families and professionals you work alongside.
- Practice with a holistic, evidence based approach.
- Have impeccable communication skills in order to provide clear support and training to relevant parties.
- Work well both independently and as part of a multidisciplinary team.
- Be flexible in your approach and adapt to a variety of circumstances and requests, according to needs.
- Act as a champion for the HSR Psychology service.



**We provide immediate access to
broad range of child psychology
services to early years, schools,
post-16 education providers,
parents and carers.**

Why us?

At HSR Psychology, we believe that looking after our employees and providing them with an enjoyable working environment is an important aspect to a successful organisation. If you are successful in this application process, you will be able to enjoy:

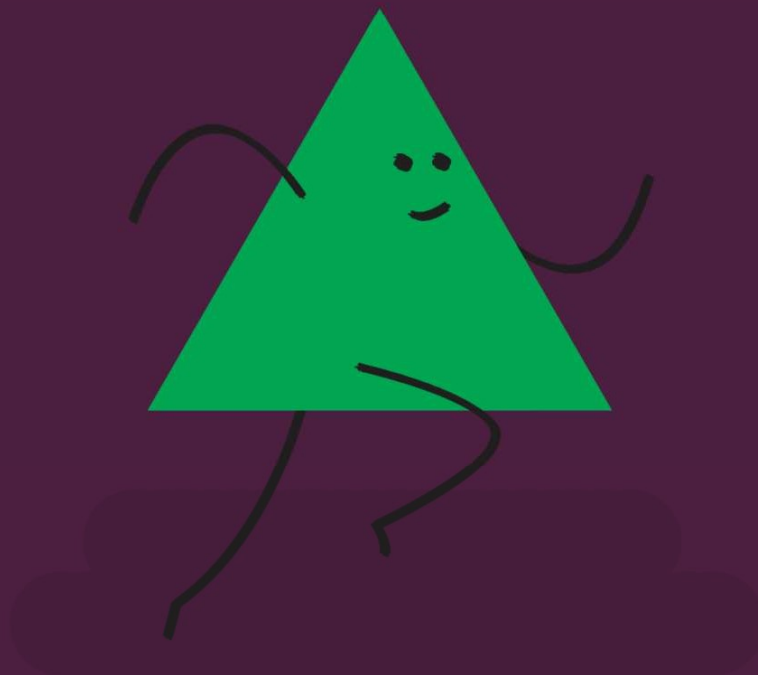
- Working for an innovative organisation that puts children and young people's needs first.
- Being part of a supportive team.
- Multidisciplinary links with assistant psychologists, clinical psychologists, speech & language therapists, occupational therapists, mental health professionals and specialist teachers.
- Opportunities for school based work, as well as work within a private setting.
- Opportunities for both statutory and non-statutory working.
- Regular staff events.
- Flexibility in hours.
- Recognition.





happy. safe. ready.

**We believe that children and
young people's needs belong at
the centre of everything we do.**



Apply now

To apply for this position please send your CV along with any covering information to:

careers@hsrpsychology.co.uk

Alternatively, if you have any questions regarding the role please contact us using the methods below:

Call us on: 0161 820 9229

Address: HSR Psychology, 3-5 St John St, Manchester, M3 4DN

Follow us on social media:



Part of Tx Group